

Builders & Developers :

**Goldendunes Buildhome Pvt. Ltd**

Site Office : C1/A, Balaji Market, Opp. Mahaveer  
Nagar Fire Station, Shrinathpuram, Kota-324005

email id: vivantakota@gmail.com

MOB.: 9828820808, 9828620808

**Corporate Office :**

48, Cosmo Colony, Vaishali Nagar,  
Jaipur, Rajasthan, (India)

Ph. : 0141-4012808

email : info@purples.co.in

www.purples.co.in

Architects :



**Design SPACE ARCHITECTS PVT. LTD.**

Add: Plot No. 65, Acme Heights,  
Visheshwariya Nagar, Jaipur, 302018.  
Ph. 0141-2763533, Cell: 09828117586  
E-mail: sunil@designspaceconsultants.com  
Website: webmail.designspaceconsultants.com

**Disclaimer:** This Brochure is purely conceptual and not a legal offering. Further the Promoters/Architect reserve the right to add/delete/ modify any details/specifications/elevation mentioned

www.purples.co.in

A Project by



2/3/4 BHK Residential Apartments

Where luxury is also amazed !

*A new chapter in luxury living begins here...*





After the Grand Success of  
Panache, Alwar and City Centre,  
Barmer The Purple Group Presents  
the *Vivanta* epitome of  
exclusivity. The project, comprising  
273 2/3/4 BHK Residential  
Apartments, penthouses, offers an  
unparallel style of living.



world-class amenities makes *Vivanta* different from others...





“At *Vivanta* it is a dream come true by getting the state of art luxury in 2/3/4 BHK class. It is the project with a rare collection of indulgent homes encrusted with the best that money can buy.”



2/3/4 BHK Premium Luxury Apartments | Well Equipped Club House

many reasons to choose *Vivanta* as your dream home



< SWIMMING POOL  
Swimming pool and Toddler pool for relaxation



< INDOOR GAMES  
Indoor games like Billiards Table Tennis, Chess etc.



< SAUNA BATH  
Separate Steam and Sauna bath for Male and Female



< GYMNASIUM  
State-of-the-art Gym and Fitness center



< MINI THEATER  
35 Seats mini theater



< CHILDREN'S PLAY AREA  
For your little angles to keep them busy and healthy



A rare luxury called

*Vivanta*  
2/3/4 BHK Residential Apartments





## A life amongst nature, and a satisfying community life for the new Indian family

Distinctive contemporary architecture that is centrally located in Kota, open spaces and located in the bustling neighborhood of Mahaveer Nagar, Kota, The Purples VIVANTA makes an exciting destination to live in. VIVANTA is a well-planned community ensuring maximum natural light and ventilation to each unit, wide balconies and corridors that fuse convenience and luxury with a touch of class.

Designated walk areas, abundant parking, wide open areas that allow residents to relax in the beautiful landscape and eco-friendly measures like processed and recycled water, rainwater harvesting make VIVANTA a great choice for your home. VIVANTA is a stone's throw away from City Mall, Baran Road and located very close to Schools and Colleges which makes it an attractive location. The prominence throughout is on luxury and affordability.

Soaring above the Kota's premium lifestyle hub, VIVANTA is destined for new Indian Family those who are charmed by the view of a well-ventilated, thoughtfully designed for everyday leisure and well-being home right in the hub of bustling Kota.

Come and experience VIVANTA...





VIVANTA MAKES A STATEMENT  
IN KEEPING WITH STATUS  
OF THE OWNER'S PRIDE

  
**Vivanta**  
2/3/4 BHK Residential Apartments  
*Where luxury is also amazed...*



## Talk of the Town

Live a privileged life an adobe of automated luxury. Located in one of the most desirable spots of Kota, Towers of Vivanta of approx 273 units of premium amenities. You can choose from our wide range of super luxury 3 BHK apartments, 4 BHK penthouses. Lavish indoor and outdoor space, landscape gardens, shopping centers, high-end malls, international schools are all close to the location making Vivanta talk of the town.

A well planned gated development has been designed to enhance community living, Well-appointed apartments of international standards, boasts of premium amenities and finishes.

Panoramic night view of the Vivanta



world-class amenities  
makes this an  
architectural icon

- Amphitheater
- Barbecue Pavilion
- Water play
- Sand pit
- Pebble bed
- Yoga deck
- Mediation pavilion
- Temple
- Car washing area
- Atm
- Drivers dormitory
- Home delivery services like
- plumbers, electrician
- Vastu Friendly
- Saloon
- Day care centre
- Water filtration & softening plant
- Maintenance by international standard security managers
- Servant dormitory
- Gazebo
- Playpen
- Senior citizen sitting
- Peace full and pollution free area
- Secured Campus High security at entry and exit
- Gated township at 7ft high wall
- Balconies giving open view of greenery and landscape
- Intercom Facility
- Tensile Structure
- Library

  
**Vivanta**  
2/3/4 BHK Residential Apartments  
*Where luxury is also amazed....*

  
**Vivanta**  
2/3/4 BHK Residential Apartments

where lifestyle  
is a statement of your  
fine taste

Vivanta. An Ultimate luxury reigns in this distinguished enclave nestled in the heart of a much sought after location in Kota. Beautifully designed floor plan, sophisticated spaces- open, airy and graced with a modern flair- and immaculate finishes have created an amazingly refined living experience for the chosen few.





Architectural  
design promotes  
optimal usages of  
natural resources

welcoming.  
*Drawing Room*

TV/Telephone/A.C./Cooler point in all the rooms • Power backup for common service.

the kitchen  
a key part of our  
living space

functional  
*Kitchen*

Semi-Modular Kitchen • Black Granite working counters, SS sink • 2' tiles dado above the counter.









## Specifications

### STRUCTURE

- Earthquake resistant framed structure design as per Seismic Zone II.

### APARTMENT FEATURES

- Premium Class flooring of Vitrified Tiles/Marble in bedroom.
- Wooden Flooring in Master Bedroom
- POP finish on wall & ceiling with cornices.
- Acrylic Plastic paint on wall & ceiling.
- Polish/Paint on doors & windows.
- Provision for Invertor.

### KITCHEN

- Black Granite working counters, SS sink.
- 2' tiles dado above the counter.
- Semi-Modular Kitchen.
- Separate Washing Area.

### WOOD WORK

- Windows having Glass panels/wire mesh panels with safety grills
- Tough ISI mark flush doors.
- Well designed main door of 30 mm thickness.
- Designer fitting of good quality on doors & windows.

### TOILET

- Designer Spanish tile in toilet.
- C.P. Fitting of Jaquar Continental Range.
- Ceramic tiles in toilet upto 7' height on walls.
- Anti-skid ceramic tiles on flooring.
- Jet in all Toilets.
- C.P. Accessories in Toilets of Premium brand.

### SECURITY SYSTEM

- Closed Circuit TV (in Entrance lobby/Parking area).
- EPBX system.
- Well managed Security Service.

### ELECTRICAL

- Modern electrical system with concealed Copper Wiring.
- Premium quality Switches & Accessories.
- TV/Telephone/A.C./Cooler point in all the rooms at appropriate places.
- Power backup (Silent D.G. Set) for common service.
- Fan & Tube lite provided.

### GENERAL FEATURES

- 2 High Speed capsule passenger lifts.
- 2 High Speed 13 passenger lifts.
- 2 High speed 8 passenger lifts.
- Well designed Entrance foyer & Lobby area.
- Well designed landscaped garden
- Appropriate fire fighting arrangements.
- 24 hour water supply through own tubewell.
- 24 hour security system
- Rain water harvesting system.





## SWIMMING POOL

Swimming pool and  
Toddler pool for relaxation



## GYMNASIUM

State-of-the-art Gym  
and Fitness center







## SAUNA BATH

Separate Steam and Sauna bath  
for Male and Female



## INDOOR GAMES

Indoor games like Billiards  
Table Tennis, Chess etc.



## MINI THEATER

35 Seats mini theater



## CHILDREN'S PLAY AREA

For your little angels to keep  
them busy and healthy











Ground Floor Plan



First Floor Plan





Typical Floor Plan

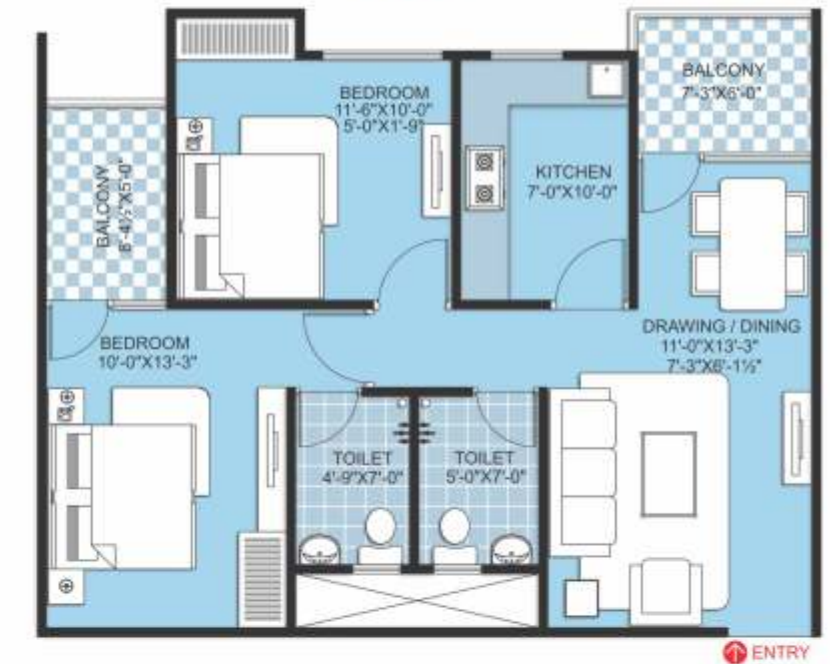
2 BHK Type 1 1082.00 sq.ft.



FLAT - 108 & 113



2 BHK Type 2 1041.00 sq.ft.

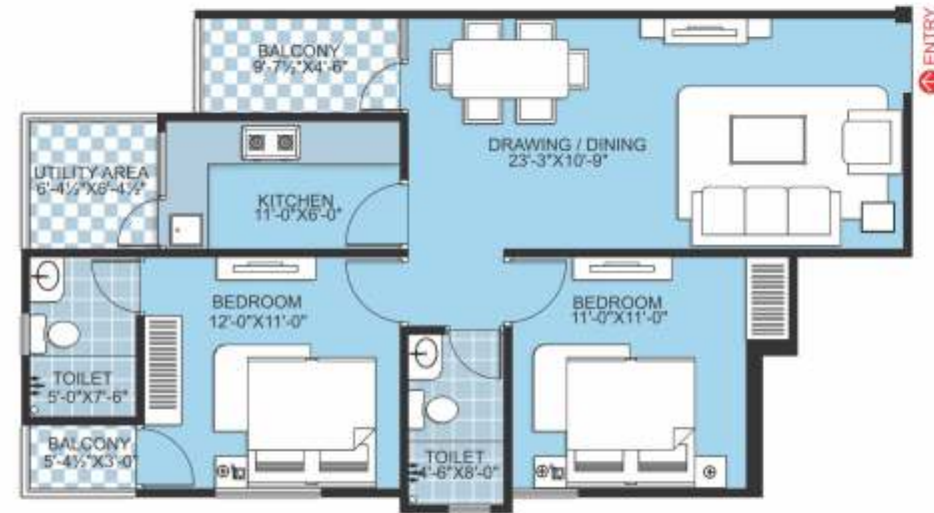


FLAT - 101, 102, 109, 110, 111, 112, 119, 120

Unit Plan



2 BHK Type **3** 1125.00 sq.ft.



FLAT - 104 & 117



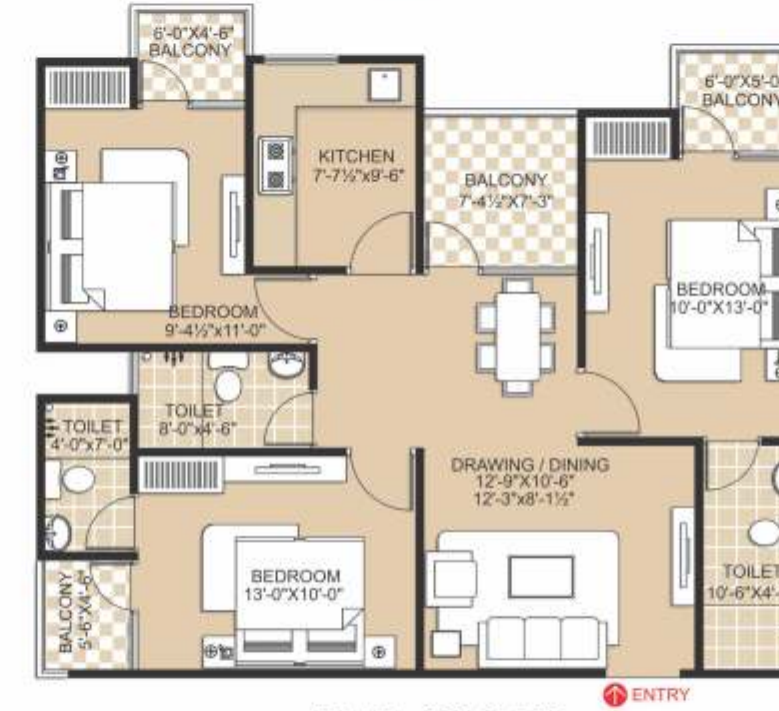
3 BHK Type **4** 1408.00 sq.ft.



FLAT - 105, 106, 107, 114, 115, 116



3 BHK Type **5** 1368.00 sq.ft.

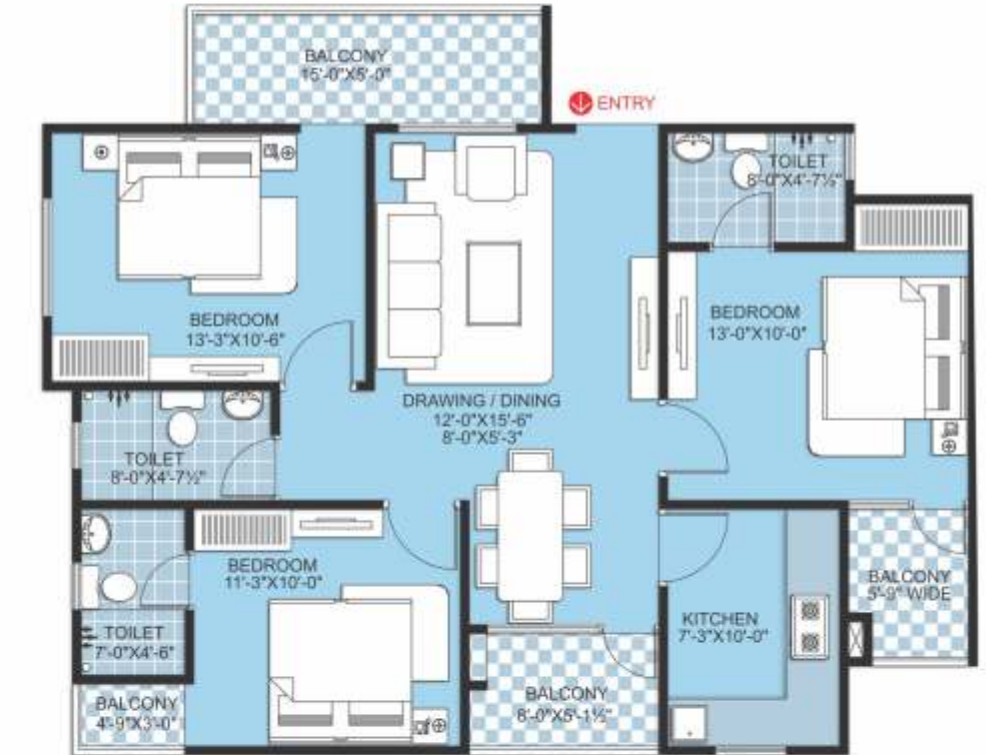


FLAT - 103 & 118



3 BHK Type **6** 1421.00 sq.ft.

FLAT - 121







## The Purple Group

PURPLE GROUP is amongst the reliable real estate groups with plenty of projects built-in. Our core business value is at the heart of our booming ventures-innovative spaces, elegant designs and solid structure.

We believe 'service is our business' and keeping this in mind we have set high standards for the same.

The company has achieved a remarkable success by launching its luxury apartment and Shopping Mall, Industrial Parks in Rajasthan.

The quality of living and commercial space teamed with the plenty of projects makes Purple group high on demand. The group envisages to uplift the living standards of people by providing facilities and amenities that are a benchmark in itself.

### Previous Projects

- |                    |          |
|--------------------|----------|
| • Panache          | - Alwar  |
| • City Centre      | - Barmer |
| • C-Scheme         | - Barmer |
| • Taru Chaya Nagar | - Jaipur |
| • Coral Shristi    | - Jaipur |



  
**Vivanta**

2/3/4 BHK Residential Apartments

Site Address : C-1/A, Balaji Market, Behind Mahaveer Nagar Fire Station, Kota, 324005 Rajasthan.

